

Kio Staff Safe

Quick Start Guide

Kio Staff Safe is a discreet alerting and rapid incident response solution that supports your organization's duress response protocols.



Faced with a duress event or emergency situation?

Your Kio **Smart Badge** provides a discreet, silent method to activate a rapid response to your *real-time location*. When *signaling for help* from your badge, a duress alert is automatically activated and responders are notified with your *real-time location* to intervene and de-escalate the situation.

S

SIGNAL for help

Press a **button** on your Smart Badge **three times in quick succession**.

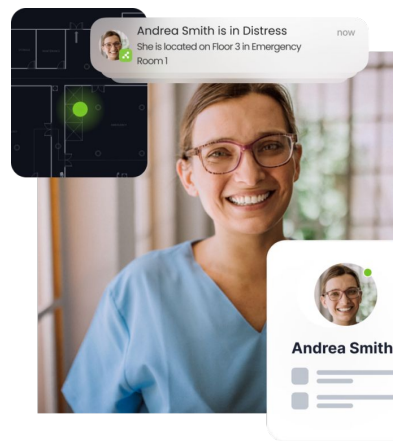
This triple-press action ensures intentional use to signal for help and reduces the chance of an accidental call.



A

ALERT activated & responders notified

Your signal for help immediately sends alert notifications to security and nearby staff with your *real-time location*.



F

FOUND by responders

Responders quickly find you by knowing your *real-time location*, even when you are on the move.

E

ENHANCES YOUR SAFETY with a touch of a button

In a moment of duress, remember, you are never alone. With 3 presses of a button on your Smart Badge, help is immediately on its way and your *exact real-time location* is pinpointed.

Want to learn more?

Watch the Kio Staff Staff video. Scan the QR Code.



Kio Staff Safe

Proper badge placement

Placement is important to ensure your real-time location is known during a duress or emergency event.



Button facing body

With the buttons facing your body, this helps to prevent accidental activation and ensures you can discreetly press a button in an emergency.

Clear of other items

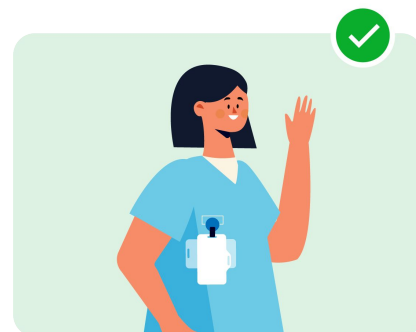
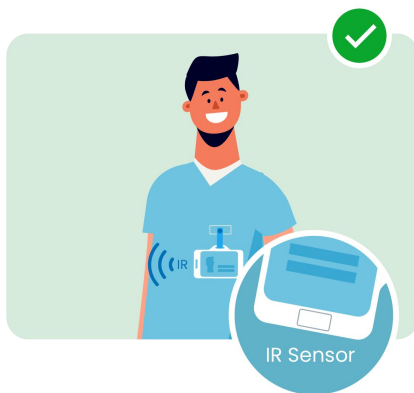
When the badge is not placed behind other accessories or obscured by clothing, this allows its wireless communication and ensures it's easily accessible to activate a call for help.

IR Sensor visible

The IR Sensor, either located on the front, non-button side or bottom corner of the badge, must always be visible and not covered by other items. During an active alert, this little sensor allows responders to receive your *real-time location* with room-level certainty.

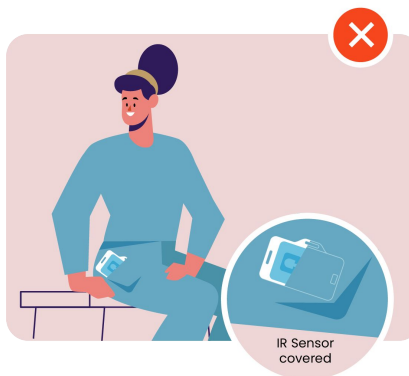
Good examples

- Buttons facing body
- IR Sensor is fully visible and unobstructed (does not apply to Smart Badge 3; IR Sensor is located on corner exposing both sides for enhanced visibility)
- Clear of other items
- Attached to the outside of your clothing



Bad examples

- Badge covered by clothing – placed in pocket or hidden under a jacket or shirt
- Badge obscured by other items – placed behind other objects makes it difficult to see or access
- Incorrect badge orientation – worn with buttons facing outward or IR Sensor covered



TIP

Avoid attaching the badge to a clip that could rotate the badge

